

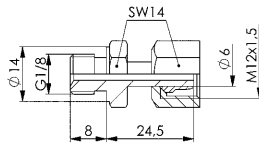
No. 6994-010

Screw-in fitting, straight, light duty

for steel tubes with outer diameter 6 mm and internal diameter 3 mm, with olive ring.



CAD



Order no.	Article no.	max. operating pressure [bar]	Weight [g]
320689	6994-010	315	25

Design:

To DIN 3852 form B by sealing edge or by sealing edge ring and olive ring or O-ring.

Note:

Warning: Do not use Teflon tape!

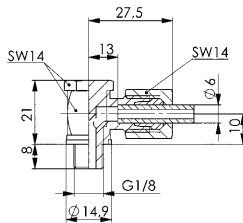
No. 6994-030

Pivoting fitting, angled, light duty

for steel tubes with outer diameter 6 mm and internal diameter 3 mm, with olive ring.



CAD



Order no.	Article no.	max. operating pressure [bar]	Weight [g]
320705	6994-030	315	74

Design:

To DIN 3852 form B by sealing edge or by sealing edge ring and olive ring or O-ring.

Note:

Warning: Do not use Teflon tape!

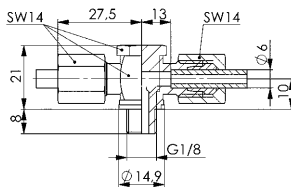
No. 6994-040

Pivoting T-fitting, light duty

for steel tubes with outer diameter 6 mm and internal diameter 3 mm, with olive ring.



CAD



Order no.	Article no.	max. operating pressure [bar]	Weight [g]
320721	6994-040	315	85

Design:

To DIN 3852 form B by sealing edge or by sealing edge ring and olive ring or O-ring.

Note:

Warning: Do not use Teflon tape!

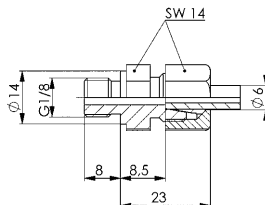
No. 6994-050

Screw-in fitting, straight, light duty

for steel tubes with outer diameter 6 mm and internal diameter 3 mm, with olive ring.



CAD



Order no.	Article no.	max. operating pressure [bar]	Weight [g]
320747	6994-050	315	25

Design:

To DIN 3852 form B by sealing edge or by sealing edge ring and olive ring or O-ring.

Note:

Warning: Do not use Teflon tape!

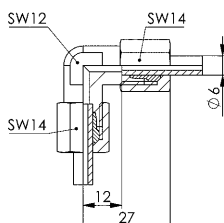
No. 6994-060

Fitting, angled, light duty

for steel tubes with outer diameter 6 mm and internal diameter 3 mm, with olive ring.



CAD



Order no.	Article no.	max. operating pressure [bar]	Weight [g]
320762	6994-060	315	51

Design:

To DIN 3852 form B by sealing edge or by sealing edge ring and olive ring or O-ring.

Note:

Warning: Do not use Teflon tape!

Subject to technical alterations.