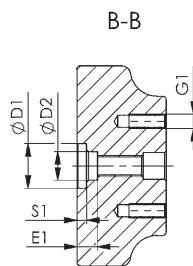
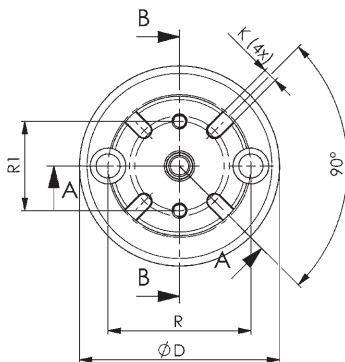
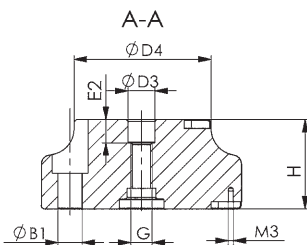
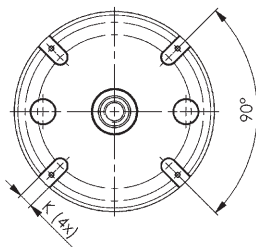


No. 6210IA-20-10

Adapter reduction from K20 to K10, with indexing

Tempered steel, plasma-nitrided and burnished.



Order no.	Size	H ±0.01	Weight [g]
532499	K20 - K10	50	2892

Application:

The adapter element with indexing is used to reduce the intermediate element size K20 and K10.3 to size K10. Intermediate elements or assembly elements can be adapted.

This clamping system can be used to move workpieces to the required machining height in the machine for 5-sided machining, or for the safe and quick clamping of workpieces with ledges and different clamping heights on the machine table.

Thanks to the 4-point 90° indexing option, workpieces under strong machining forces can be secured to prevent radial distortion.

Advantage:

Simple, quick and flexible clamping of complex workpiece contours on the machine table. Especially suitable for levelling workpieces or clamping fixtures at the necessary machine heights in the machine tool and for the reliable clamping of same.

Note:

Order numbers for the centering sleeves:

- Ø15: Order no. 535732

- Ø16: Order no. 78006

- Ø22: Order no. 78238

Slot nuts: Order no. 430264.

The fastening screws are supplied as standard.

Dimensions:

Order no.	Size	dia. B1	dia. D	dia. D1 0/+0,01	dia. D2 F7	dia. D3	dia. D4	Screw DIN84 or ISO4762	E1	E2	G	G1	K F6	R	R1	S1
532499	K20 - K10	13,5	112	25	16	15	78	M12x50	9	13	M12	M8	8	80	50	5,5

