

## No. 6212M

### Clamping module, mechanical

Open and close mechanically.  
Tool steel, hardened.  
Repetition accuracy < 0.01 mm.



Order no.	Size	Pull-in/locking force up to	Holding force*	Weight
		[kN]	[kN]	[g]
553405	K10	10	17	360
559094	K20	20	43	1330

#### Application:

Mechanical zero point clamping system for setting time-optimised clamping during cutting or non-cutting machining. Particularly suitable for the modular design of clamping solutions via zero point clamping system.

#### Note:

The mechanical zero-point clamping system has high holding, pull-in and locking forces. The K10 clamping module is fastened centrally with an M8 flat-head screw, the K20 clamping module with an M12 cylinder screw.

The K20 clamping module can only be used with the K20 pull-studs in the M12 version.

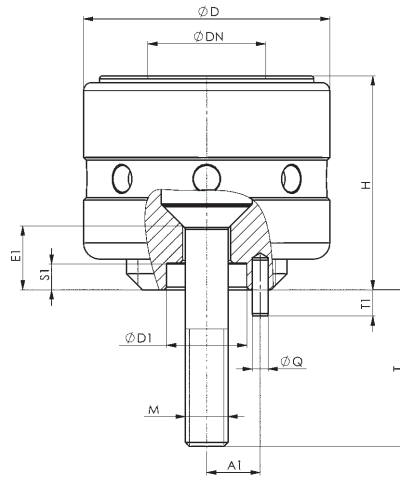
To open and close the clamping modules, we recommend the following AMF hook spanner:

- size K10= order no. 54940

- size K20= order no. 54973

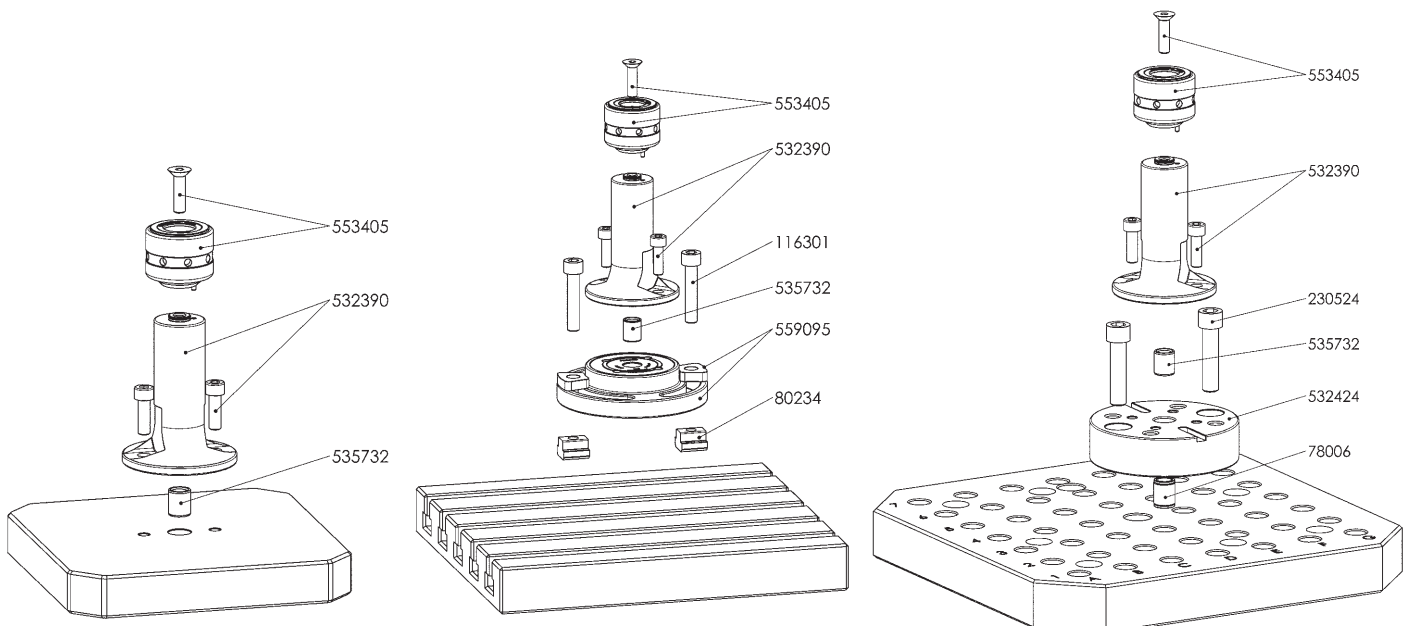
A cylinder pin is supplied as standard. In addition, fastening bolts for use with the support elements (order no. 532390, 532374) and for use on a fixture are included.

\* Please observe the installation instructions.



#### Dimensions:

Order no.	Size	A1	dia. D	dia. D1 0/+0,01	dia. DN	E1	H $\pm 0.01$	M	dia. Q	S1	T	T1
553405	K10	10	46	15	22	12	40	M8	3	5,0	29	4,9
559094	K20	16	70	25	32	14	60	M12	4	5,5	16	5,2



Subject to technical alterations.