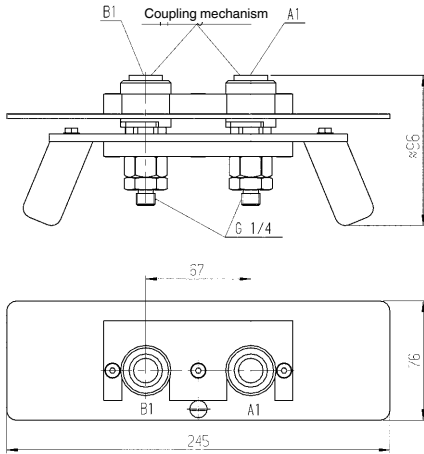


No. 6919-25

Coupling Unit for Pallet Decoupler Block

max. operating pressure 400 bar.



Order no.	Article no.	Q [l/min]	Weight [g]
320028	6919-25	7,5	2200

Design:

The coupling unit consists out of two coupling mechanism No. 6919-25M, order no. 320036 for clamping and unclamping circuit. The coupling elements are mounted to an adapter with handle and disengaging mechanism.

Application:

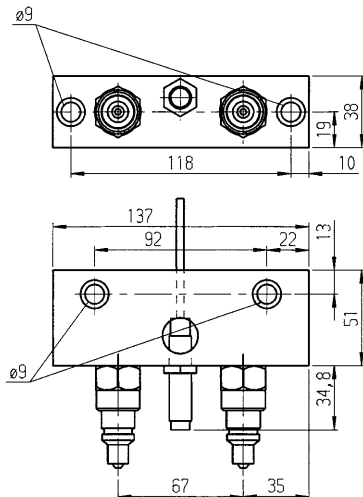
The coupling unit is used to connect the oil supply with the pallet decoupler block No. 6919-20.

Features:

Simple handling due two hand operation. Interchanging of connections is impossible.

No. 6919-30

Store Station for Coupling Unit



Order no.	Article no.	Weight [g]
320044	6919-30	1837

Design:

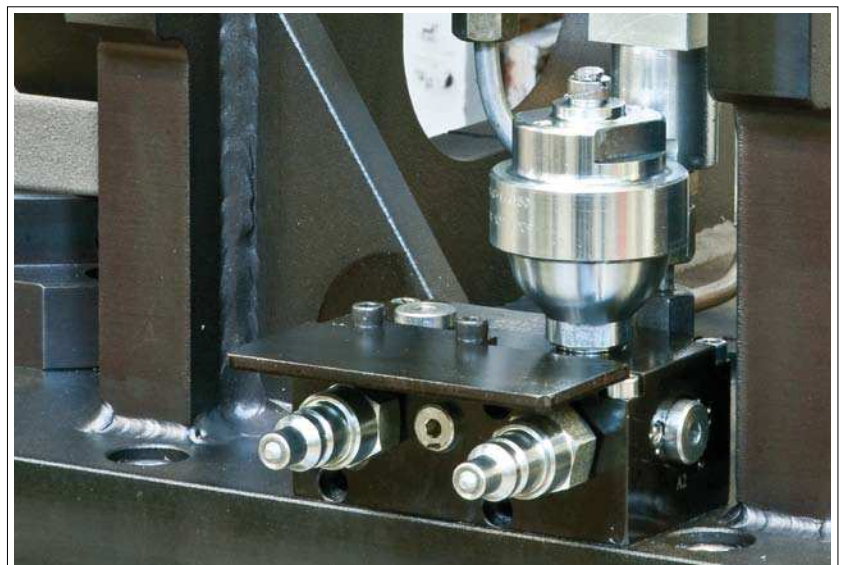
Safety sensor switch integrated and coupling connector No. 6919-20S, order no. 320010.

Application:

The store station is used as holder for the coupling unit after decoupling from the pressure tank switch unit.

Features:

If used with your machine control, the signal of the safety sensor switch, can ensure that the fixture pallet cannot be moved before the coupling unit is disconnected and removed correctly from the pallet decoupler block.



Subject to technical alterations.