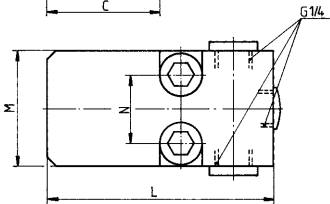
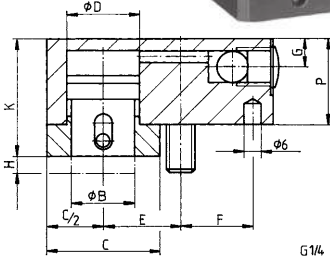
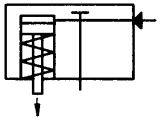


## No. 6945-11

### Clamping Head

single acting, with spring return, max. operating pressure 400 bar.



Order no.	Article no.	Clamping force at 400 bar [kN]	Stroke H [mm]	Vol. [cm <sup>3</sup> ]	Screw (2 pieces)	Md max. [Nm]	Spring force min. [N]	Weight [g]
61218	6945-11-20	20	6	2,9	M10x35-10.9	65	120	790
61234	6945-11-32	32	8	6,4	M12x45-10.9	120	260	1625
60327	6945-11-63	63	10	16,0	M16x50- 8.8	200	580	2700
63990	6945-11-94	94	12	28,5	M20x70-12.9	670	920	5600

### Design:

Cylinder body made of tempering steel, blued. Piston case-hardened and ground. Built-in return spring.

### Application:

The upper part of the clamping head can be screwed on direct on clamping devices.

### On request:

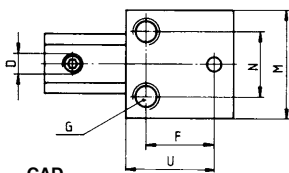
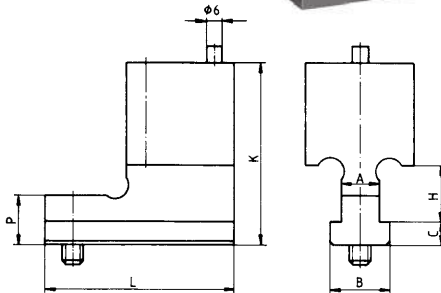
Special sizes available on request.

### Dimensions:

Order no.	Article no.	dia. B	C	dia. D	E	F	G	K	L	M	N	P
61218	6945-11-20	22	40	25	27	26	10	41,0	80	40	24	30
61234	6945-11-32	26	50	32	34	32	13	53,0	100	50	28	41
60327	6945-11-63	38	60	45	41	38	15	63,0	120	60	34	48
63990	6945-11-94	47	70	55	50	55	15	79,5	150	80	46	62

## No. 6945-11

### Base for Clamping Head



Order no.	Article no.	A [mm]	H [mm]	Weight [g]
61226	6945-11-20x14	14	25	680
61440	6945-11-20x18	18	25	790
61242	6945-11-32x18	18	25	1230
61457	6945-11-32x22	22	30	1470
60285	6945-11-63x22	22	30	1960
61465	6945-11-63x28	28	37	2380
60475	6945-11-94x28	28	36	4750

### Design:

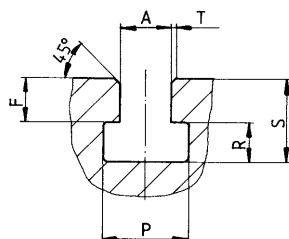
Tempering steel, blued. Complete with locating pin.

### On request:

Special sizes available on request.

### Dimensions:

Order no.	Article no.	B	C	D	F	G	K	L	M	N	P	U
61226	6945-11-20x14	22	8	M8	26	M10	65,0	70	40	24	18	32,7
61440	6945-11-20x18	28	10	M8	26	M10	72,0	70	40	24	24	32,7
61242	6945-11-32x18	28	10	M10	32	M12	73,0	90	50	28	24	40,4
61457	6945-11-32x22	35	14	M10	32	M12	82,0	90	50	28	32	40,4
60285	6945-11-63x22	35	14	M10	38	M16	85,0	110	60	34	32	48,3
61465	6945-11-63x28	44	18	M10	38	M16	94,0	110	60	34	40	48,3
60475	6945-11-94x28	44	19	M10	55	M20	125,5	140	80	46	47	69,0



### Dimensions for T-slots in accordance with DIN 650:

A	F* min.	F* max.	P	R	S min.	S max.	T max.
14 <sup>H8</sup>	12	19	23 <sup>+2</sup>	9 <sup>+2</sup>	23	28	1,6
18 <sup>H8</sup>	16	24	30 <sup>+2</sup>	12 <sup>+2</sup>	30	36	1,6
22 <sup>H8</sup>	20	29	37 <sup>+2</sup>	16 <sup>+2</sup>	38	45	1,6
28 <sup>H8</sup>	26	36	46 <sup>+2</sup>	20 <sup>+2</sup>	48	56	1,6

\* Please check this dimension on your machine

Subject to technical alterations.