

No. 6945-28

Clamping Stud Holder, hydraulic

for direct attachment to ram.



CAD

Order no.	Article no.	max. operating pressure [bar]	Pull Force cylinder [kN]	Clamping stud dia. [mm]	Spring force min. [N]	Weight [Kg]
6163	6945-28-007	230	54	40	1200	47
61390	6945-28-010	400	50	1200	66	



Design:

Cylinder body made of tempering steel. External, vertical surfaces painted yellow. Complete with two clamping pistons No. 6945-15-10 and cover plates.

Application:

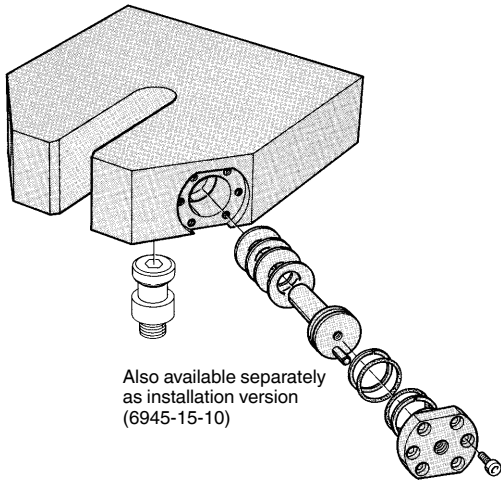
Clamping stud No. 6945-02-04-***, which is screwed into the tool, is gripped hydraulically when it has entered the opening in the clamping-pin chuck.

Note:

No DIN clamping studs must be used for the clamping stud holder. Mounting holes can be incorporated on request. Untoleranced dimensions are to DIN ISO 2768 medium.

On request:

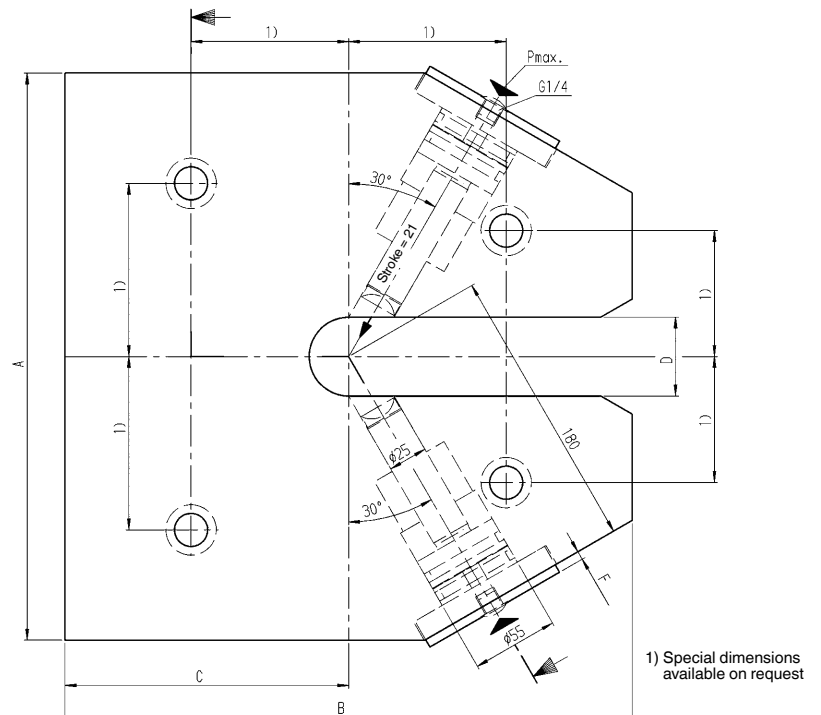
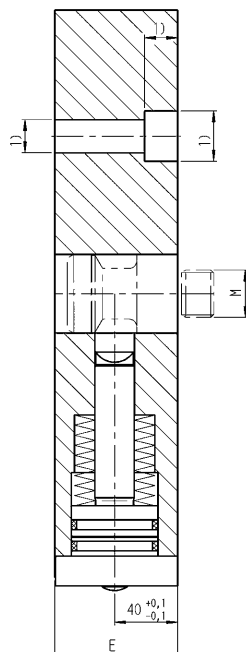
Special versions available on request.



Also available separately as installation version (6945-15-10)

Dimensions:

Order no.	Article no.	A	B	C	D +0.1/+0.3	E	F	M
6163	6945-28-007	360	270	135	40	78	1,5	M24x1,5
61390	6945-28-010	360	360	180	50	78	5,5	M30x2,0



1) Special dimensions available on request