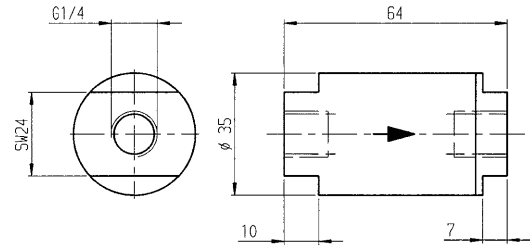
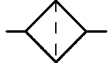


No. 6981

Filter

max. operating pressure 400 bar



Order no.	Article no.	Filteration	Weight
		[μm]	[g]
63966	6981-10-G1/4	10	380
320051	6981-25-G1/4	25	380
320069	6981-40-G1/4	40	380

Design:

Housing out of steel, zinc plated. Filter insert out of stainless steel, with o-ring. Pre-filtration by filter disc. Filter insert out of wire web.

Application:

The Filters are used as on additional safety in order to protect the hydraulic components in the oil circuit. The filter can be located direct in pipes, in front of distributors or in fittings. For example:

- 10 μm input Intensifier
- 25 μm input valves
- 40 μm input pump units or hydraulic cylinder

Note:

The smaller the filtration is chosen, as bigger the flow resistance will be.

The degree of soiling of the filter must be checked. Due to the design of the housing the exchange of the filter insert is simple. The direction of oil flow has to be considered. The installation position can be chosen freely.

Replacement part:

Filter insert 10 μm , Order No. 320077

Filter insert 25 μm , Order No. 320085

Filter insert 40 μm , Order No. 320093

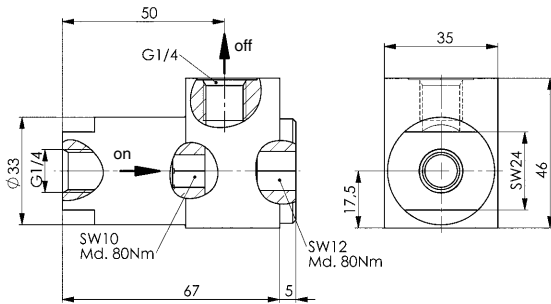
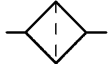
CAD



No. 6981E

Filter

max. operating pressure 400 bar.



Order no.	Article no.	Filteration	Weight
		[μm]	[g]
323626	6981E-10-G1/4	10	540
323642	6981E-25-G1/4	25	540
323667	6981E-40-G1/4	40	540

Design:

Body made of steel, zinc-plated. Filter insert of aluminium. Filter material of pleated metal fibre felt.

Application:

The Filters are used as on additional safety in order to protect the hydraulic components in the oil circuit. The filter can be located direct in pipes, in front of distributors or in fittings.

For example:

- 10 μm input Intensifier
- 25 μm input valves
- 40 μm input pump units or hydraulic cylinder.

Note:

The smaller the filtration is chosen, as bigger the flow resistance will be.

The degree of soiling of the filter must be checked. Due to the design of the housing the exchange of the filter insert is simple. The direction of oil flow has to be considered. The installation position can be chosen freely.

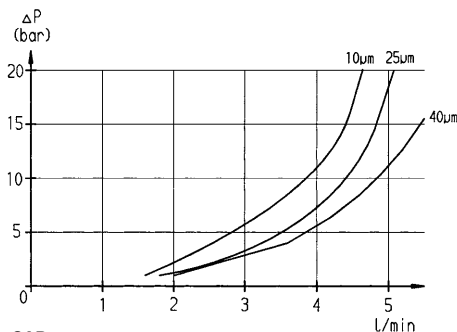
Replacement part:

Filter insert 10 μm , Order No. 323683

Filter insert 25 μm , Order No. 323709

Filter insert 40 μm , Order No. 323725

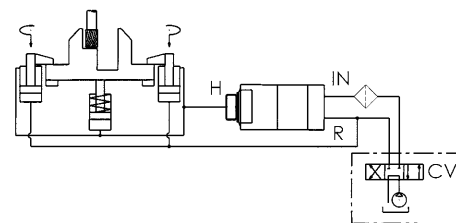
Flow-diagram:



CAD



Application example:



Subject to technical alterations.