

No. 6966R

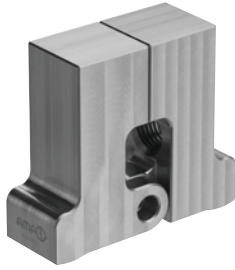
Clamping lever blank



CAD

Order no.	Article no.	Span H max. [mm]	A	B	C	E	Weight [g]
562216	6966R-01-00	8	61	24	15	52	559

NEW!



Design:

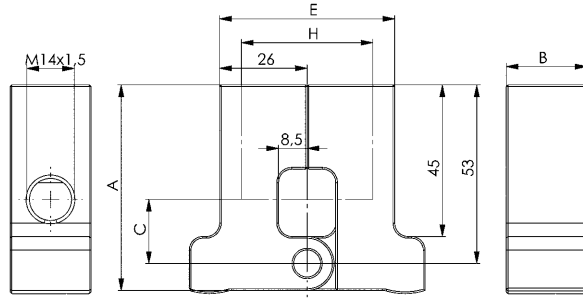
Case-hardened steel, burnished.

Application:

For clamping tongs 6966-01. The clamping lever blank can be adjusted according to the shape of the workpiece.

Note:

The span H can be increased as required, but it must be noted that shear forces of more than 8 mm can occur!



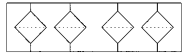
No. 6966DF

Filter plate



CAD

Order no.	Article no.	max. pressure range [bar]	Filtration [µm]	OR-1 O-ring Order No.	Weight [g]
562218	6966DF-07-100	250	100	466334	320



NEW!



Design:

Filter plate and filter sleeve made of aluminium, black anodised. Filter plates made of metal mesh.

Application:

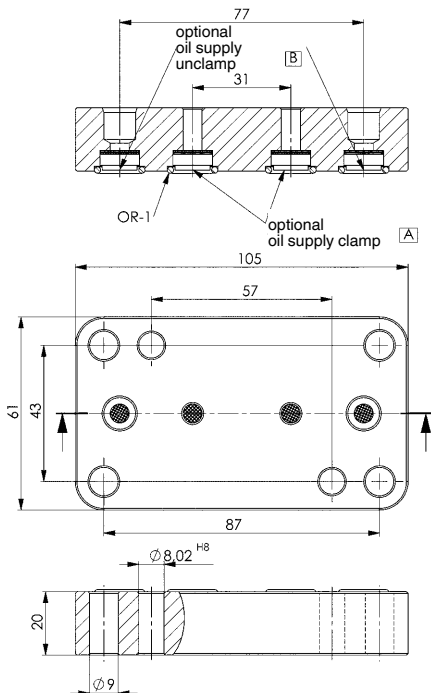
Used to protect the 6966D-07 clamp from contamination in clamping devices

Note:

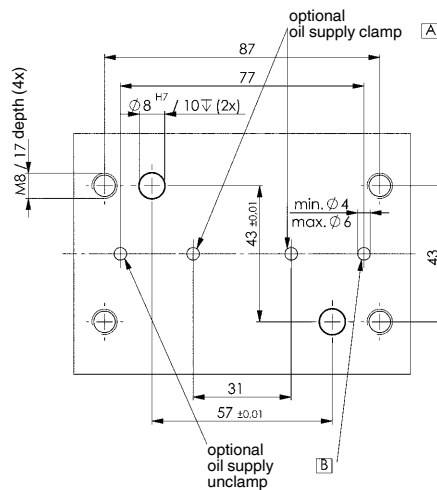
If a finer strainer is required, this can be easily replaced. The finer the filter selected, the greater the flow resistance.

Replacement filter:

- Filter, plug-in design 25 µm, order no. 562203
- Filter, plug-in design 40 µm, order no. 562204
- Filter, plug-in design 100 µm, order no. 562205



Drilling template device:



Subject to technical alterations.